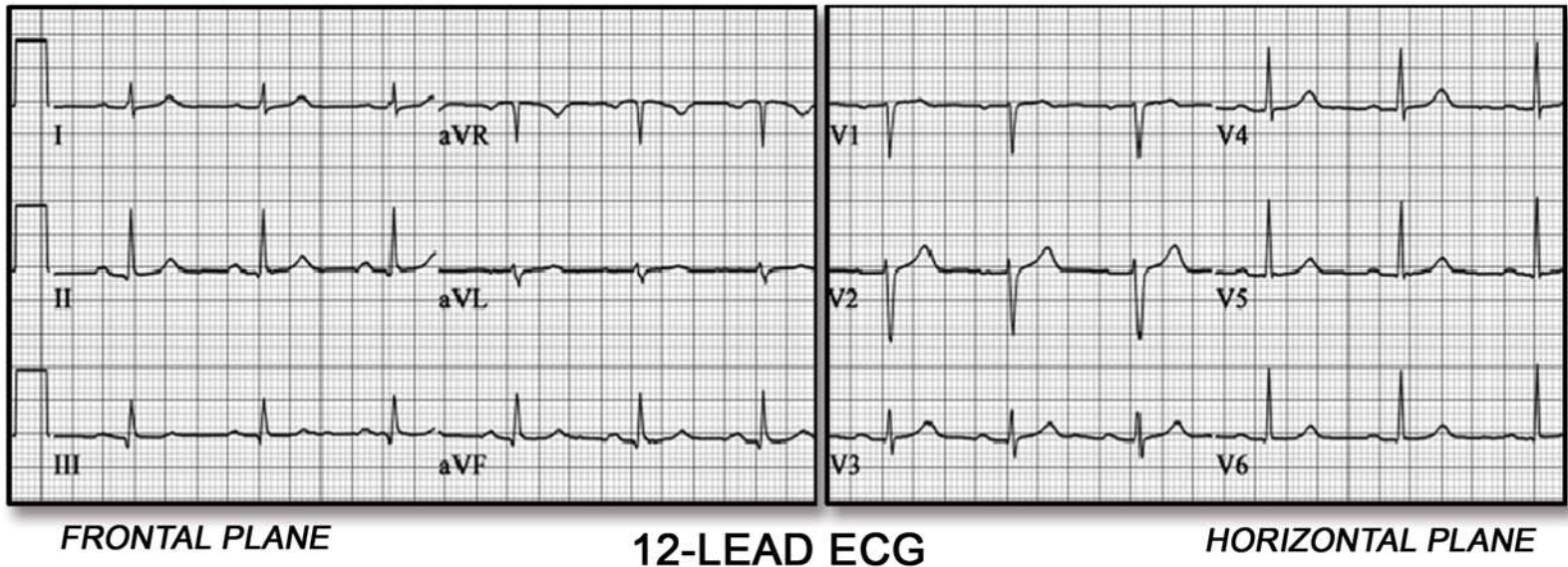


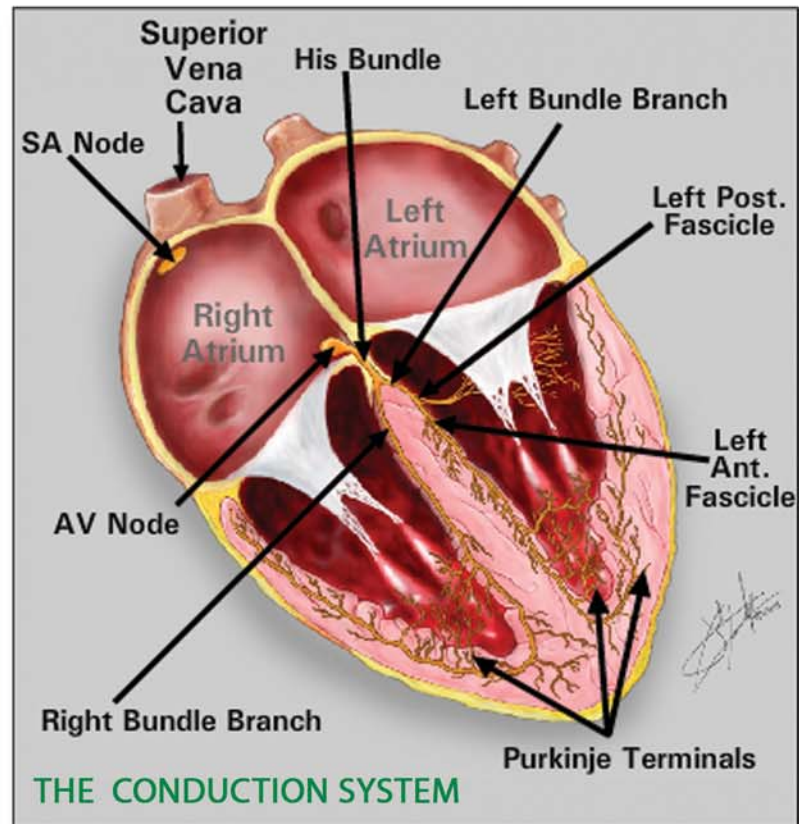
ESSENTIAL ELECTROCARDIOGRAPHY I - NORMAL ECG

A WEB-BASED INTRODUCTORY COMPUTER PROGRAM ON THE NORMAL ELECTROCARDIOGRAM



QUALITY AND BENEFITS

- ▶ Accessible on PC or Mac
- ▶ Teaches Orderly Approach to Interpretation
- ▶ Developed by Multicenter Consortium
- ▶ Incorporates Latest Curricular Design
- ▶ Interactive and Engaging
- ▶ Trains Students, Residents, Physicians, Physician Assistants, Nurses and Nurse Practitioners
- ▶ Saves Faculty Time



CONTRIBUTORS – Cardiologists and Educators from:
Miami • Arizona • Duke • Dundee • Florida • Illinois • Iowa • Mayo

Gordon Center for Research in Medical Education
Saving Lives Through Simulation Technology®

For a demonstration of **Essential Electrocardiography I**,
visit our website: www.gcrme.miami.edu

Contact us for information on how you can acquire **Essential Electrocardiography**
Phone: 305-243-6491 ♦ Fax: 305-243-6136 ♦ Email: umedic@gcrme.med.miami.edu

UNIVERSITY OF MIAMI
MILLER SCHOOL
of MEDICINE

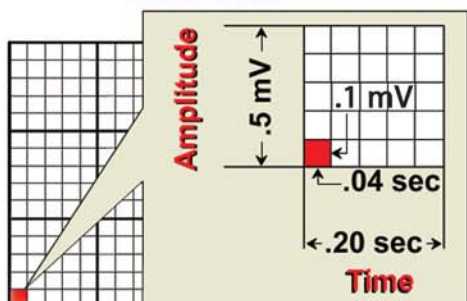


CURRICULUM

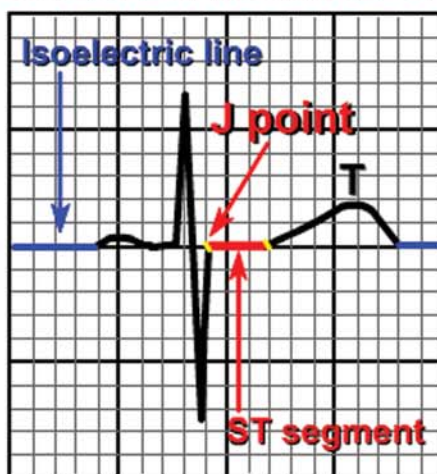
INTRODUCTION

- ▶ Conduction System
- ▶ Grid Measurements
- ▶ Complex Components
- ▶ Patient History
- ▶ Standardization
- ▶ Measuring Rate
- ▶ Sinus Rhythm
- ▶ Measuring Intervals
- ▶ Determining Axis
- ▶ Morphology of Complexes
- ▶ Principles of Interpretation
- ▶ Pediatric ECG

ECG GRID



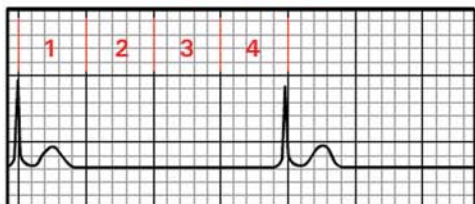
ST SEGMENT MORPHOLOGY



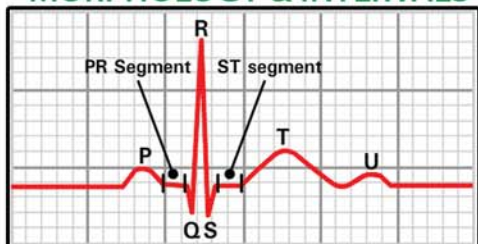
PATHOLOGIC Q WAVES



HEART RATE



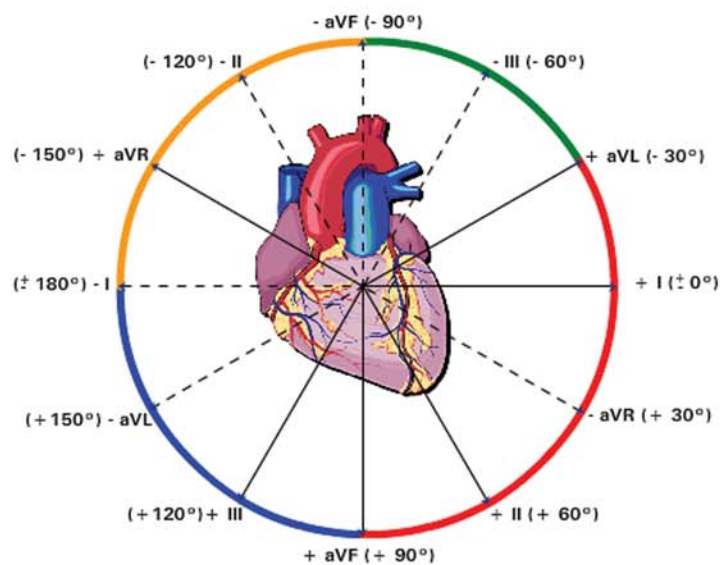
MORPHOLOGY & INTERVALS



AXIS DETERMINATION

Axis	Lead I	Lead II	Lead aVF
Normal	+	+	(+ / -)
Left	+	-	-
Right	-	+ / -	+

FRONTAL PLANE AXIS



Gordon Center for Research in Medical Education
Saving Lives Through Simulation Technology®

For a demonstration of **Essential Electrocardiography I**,
visit our website: www.gcrme.miami.edu

Contact us for information on how you can acquire **Essential Electrocardiography**
Phone: 305-243-6491 ♦ Fax: 305-243-6136 ♦ Email: umedic@gcrme.med.miami.edu